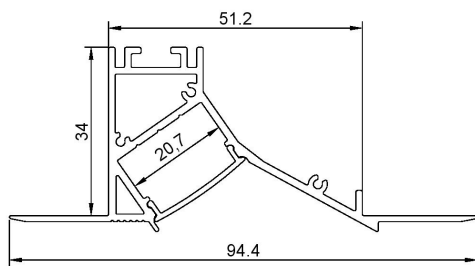
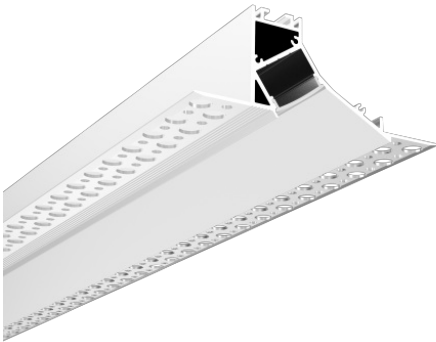


## LED Mounting Channels

## Wall Mount Plaster In Profile for LED Strip (2m)



### Specifications

Internal Width	20.7mm
Base Material	Anodised Aluminium
Diffuser Material	Polycarbonate
Diffuser Finish	Opal
Length	2m
Blank End Cap Code	n/a
Cable End Cap Code	EC126
Mounting Clip Code	n/a
Suspended Kit Code	n/a
Fixing Type	Plaster In

- 34mm wide wall mount plaster-in LED profile
- Perfectly smooth, flush surface finish
- Supplied complete with an opal diffuser
- Suitable for LED strip lights up to 20mm wide

Create a washing effect by plastering this profile neatly into your wall or ceiling.

Supplied complete with an opal diffuser, ready to install. Just add LED strip in the colour you require.

This aluminium profile can be used with any of our LED Strips. This aluminium profile can also be used with any LED Strip less than 20mm in width including Philips Hue.

### Recommended LED Strip

Any 120 LED Strip will work well providing even light with little visible spotting.