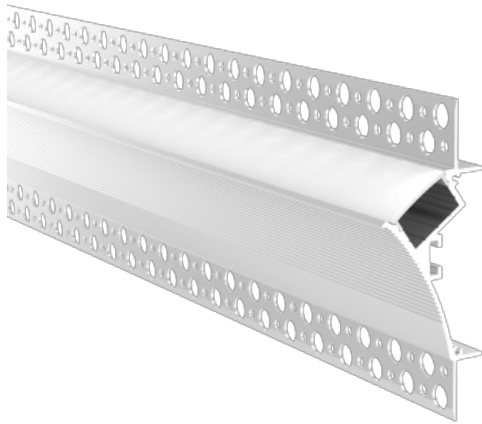


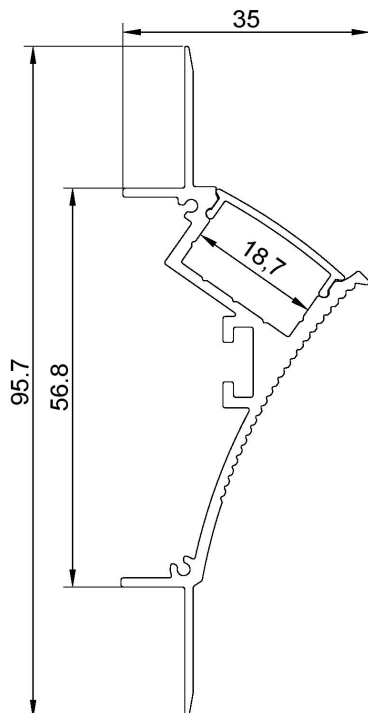
LED Mounting Channels

## Wall Washing Plaster In Profile for LED Strip (2m)



### Specifications

Internal Width	18.7mm
Base Material	Anodised Aluminium
Diffuser Material	Polycarbonate
Diffuser Finish	Opal
Length	2m
Blank End Cap Code	n/a
Cable End Cap Code	EC128
Mounting Clip Code	n/a
Suspended Kit Code	n/a
Fixing Type	Plaster In



Looking for a wall washer with a low profile finish? Then this recessed plaster-in aluminium LED profile for LED strip is designed to do just that. Screw the profile into place and plaster over the specially designed perforated outer.

Supplied complete with an opal diffuser, ready to install. Just add LED strip in the colour you require.

This aluminium profile can be used with any LED Strip less than 20mm in width including Philips Hue.

**Recommended LED Strip** - TradeStrip120 which provides even light with little visible spotting and is available in a range of white shades.